

COMMUNITY ATTRIBUTES:

Urban design
Green space common areas
Bike path & sidewalk connected
Steps to bus line, restaurants & shops

STANDARD FEATURES:

White shaker style cabinets
Soft close cabinet doors & drawers
Black accent package
Quartz kitchen countertops
Kitchen island w/ stainless steel sink
Luxury wide plank vinyl flooring
Pattern style carpeting
White 2-panel solid wood interior doors
Commercial grade windows & exterior doors
Stainless plumbing fixtures
Chef style kitchen hood
Stainless steel kitchen appliances
Master bedroom ensuite w/ walk-in closet
Living room TV wall mount ready
Wired for cable & internet

Premium upgrade packages available

RF64
APARTMENTS + TOWNHOMES

RF64
APARTMENTS + TOWNHOMES



Choice Living

Richfield Parkway & 65th Street East
Richfield, MN 55423 | Sales@LiveAtRF64.com

RF64
APARTMENTS + TOWNHOMES



LiveAtRF64.com

651.442.2484

Choice Living

RF64 APARTMENTS + TOWNHOMES is the new urban living that is centrally located in convenient Richfield. With easy accessibility for any commute, and retail proximity for any need, RF64 is truly a neighborhood re-imagined.

From abundant blue skies, to shared bike paths, to recreational parks, there's plenty to enjoy in and around RF64.

RF64 is the premiere residential destination featuring apartments and townhomes with contemporary flair. It's a community nestled in a greenscape brimming with vibrancy and intimacy. A neighborhood that's rich with life and full of energy, it's truly urban dwelling at its best – it's "Choice Living".

So whether your lifestyle caters to the convenience of a stylish apartment, or a homespun solution like our modern townhomes, there's always a right place for you at RF64. After all, it's your choice.

The RF64 Apartments + Townhomes development site is located directly to the west of Target and Home Depot, nestled between Richfield Parkway to the north and 65th Street to the south.

RF64 Townhomes

STARTING IN
THE \$300'S

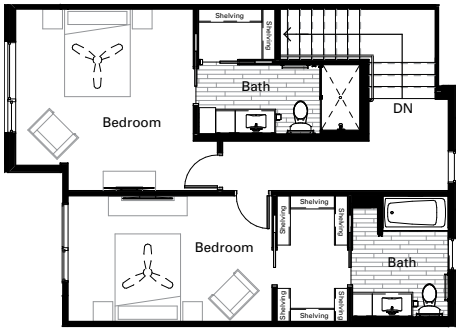
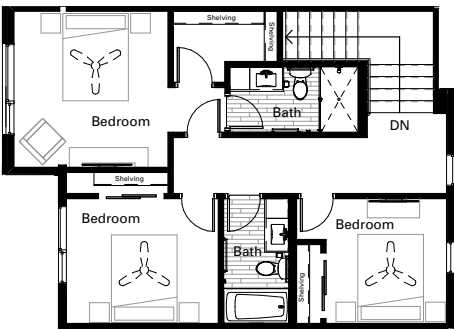
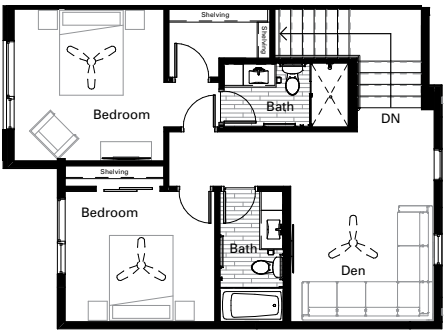
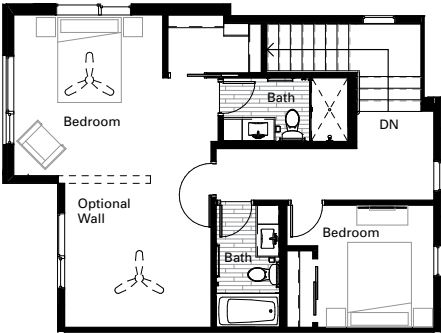
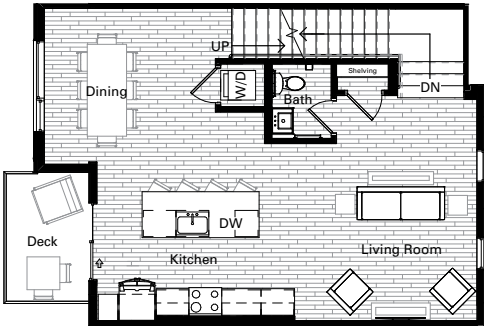
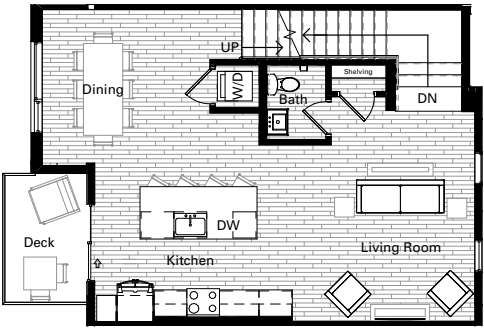
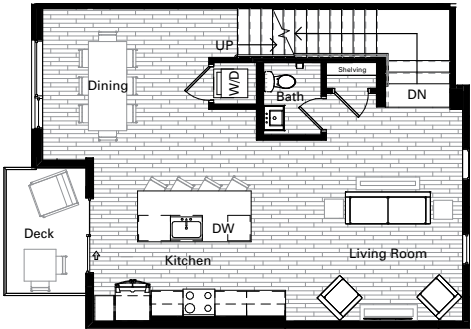
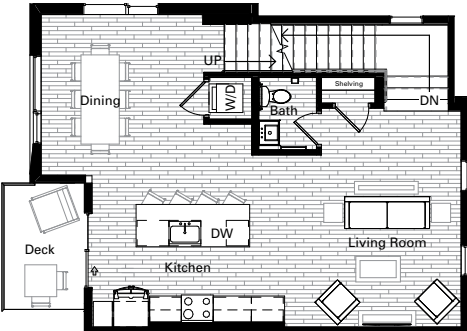
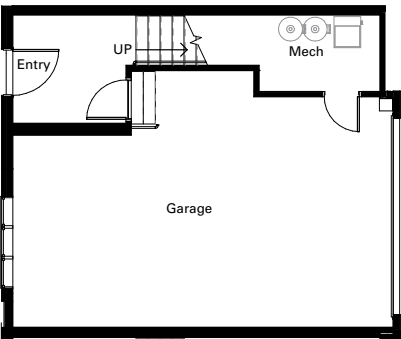
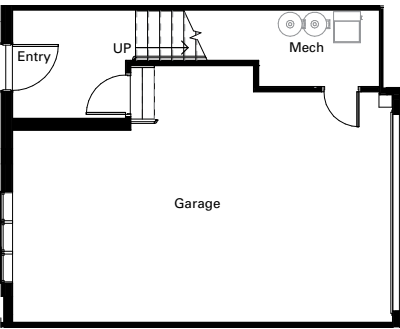
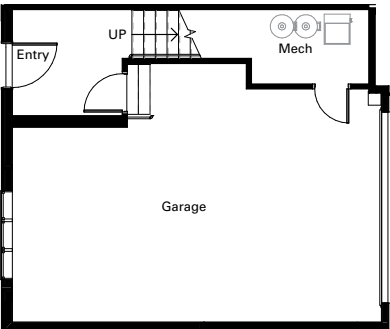
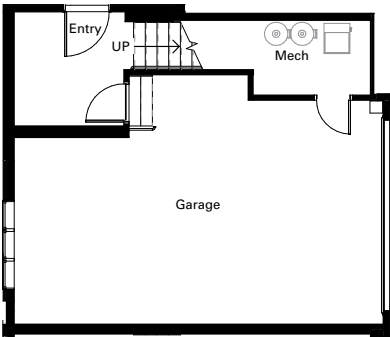


LOCATIONS
West End, Middle, East End

FLOOR PLANS
Xerxes, Cedar, Penn, York

Cedar -
2 Bedroom
+ Den

Penn -
3 Bedroom



Xerxes -
2 Bedroom

York -
Double Master